

Product Features



12 Bit I & Q

Record I & Q signals data with 12-bit quantization



Flexible 60 MHz Bandwidth

Allocate specific bandwidths to individual RF channels during recording to reduce file sizes



Wide Frequency Range

Record GNSS and other signals including L1, L2, L5, B3, E6 and S-Band with no restrictions



High Speed Data Transfer

Move data to and from internal storage with USB 3 and Gigabit Ethernet



Multi-System Sync

Allows precise synchronisation for Record & Replay using multiple LabSat 4 systems



Backwards Compatible

Scenarios recorded on LabSat 3 Wideband can be replayed on LabSat 4

Web Interface

LabSat 4 offers a user-friendly, web interface that is fully accessible through most web browsers. This interface allows complete access and control over the device, enabling users to predefine recording settings to their specific needs.

With the ability to organize and manage the scenario library stored on the internal SSD, users have the flexibility to select and replay files with full command over the attenuation levels for each scenario.

The interface's customisation extends to each RF channel, both in the pre-record phase and during replay, providing users the ability to adjust critical settings such as quantization, centre frequency, bandwidth, and sampling rate.

This level of control ensures that users can precisely configure the record profile for each available channel, making LabSat 4 an ideal solution for a wide range of GNSS testing and simulation requirements.



Test and Develop for a Wide Range of Applications

LabSat 4 is used across the world by companies and organisations that span a wide variety of industry sectors. Specialist features for industry specific applications include:

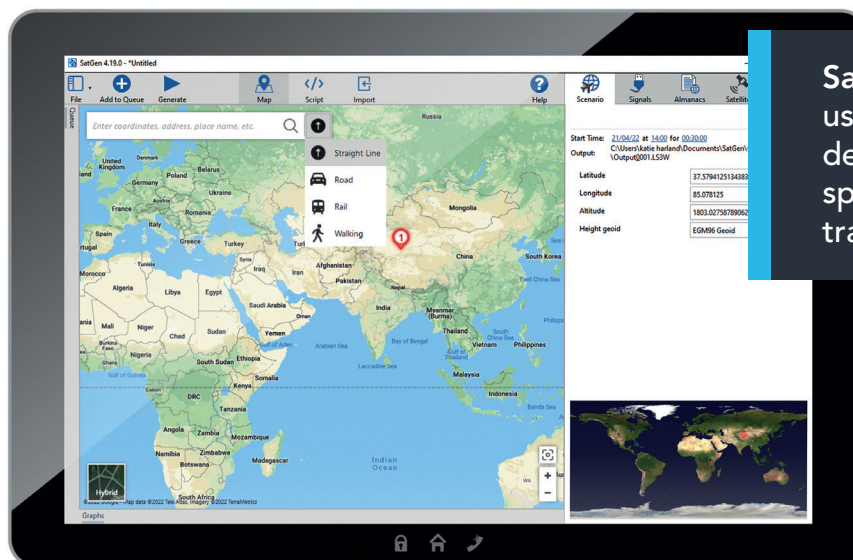
- Synchronisation with a **VBOX VIDEO** to record and replay a video of the test route to monitor performance against exact external conditions
- Use of an RF splitter to allow multiple devices to receive the same scenario from a single **LabSat**
- Space simulation scenarios with automated elevation mask to follow the true horizon
- Addition of timed stops to scenarios to simulate multi-stop routes



New SatGen Software

SatGen GNSS Simulation Software creates custom scenarios to simulate a test anywhere in the world, with position, route, speed, date, and time all defined by the user. This powerful tool allows users to generate a GNSS RF I&Q scenario file based on the unique trajectories which can then be transferred to the internal **LabSat 4** SSD for replay.

SatGen supports all signals in the upper and lower L-Band, including GPS L1C and BeiDou 3rd-generation signals for comprehensive testing.



SatGen software offers users the flexibility to create detailed scenarios based on specific time, location, and trajectories.

Learn more about SatGen simulation software: shop.stepglobal.com

Product Specifications

Constellations	GPS L1, L2, L5; Galileo E1, E5a/b, E6; GLONASS G1, G2, G3; BeiDou B1, B2a/b, B3; QZSS L1, L2, L5, L6; NavIC L1, L5, S-Band; SBAS L1, L5 Further signals in the upper and lower L band as well as the S-Band can be configured with the web interface. Bespoke requirements like Iridium and Sirius XM radio frequencies are available on request.	
Nominal Output Signal Level	-73dBm/MHz @ 0dB Variable attenuator provides between +20 dB & -69 dB of adjustment during replay	
RF Channels	3	
RF Centre Frequency	Selectable	
Number of Satellites Recorded & Replayed	All in view	
Bandwidth	Variable 10 - 60 MHz per channel	
Sampling Frequency	Automatically adjusted to suit Bandwidth 10 – 61 MHz	
Quantization	1, 2, 4, 8, 12 bits I&Q	
Data Format	I&Q	
Additional Logging	2x CAN channels, 4x Digital channels, 1x RS232 channel, 1x CAN-FD channel	
User Defined Simulation Capability	Yes. Through Optional Simulation Software License.	
Active Antenna Voltage Supply	4 - 4.5V	
Reference Oscillator	TCXO Temperature Stability +/- 0.05 ppm Frequency Stability +/- 1 ppm over first year	OXCO Temperature Stability +/- 0.05 ppm Frequency Stability +/- 0.3ppm over first year
Storage	7.68 TB Solid State Drive (SSD), 8 GB SD Card (SD card for firmware upgrades only) and removable battery pack.	
Operating Voltage	8V to 30 VDC	
Size	167 mm x 137 mm x 52 mm	
Weight	1.45 kg with battery and SSD	